



CARBURETTOR / CARBURATEUR TILLOTSON HW-50A

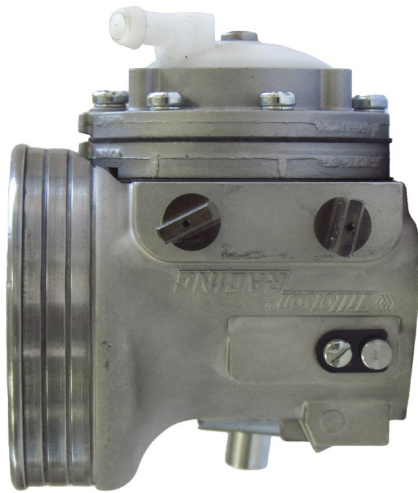


PHOTO OF ADJUSTING SIDE
PHOTO CÔTÉ RÉGLAGE

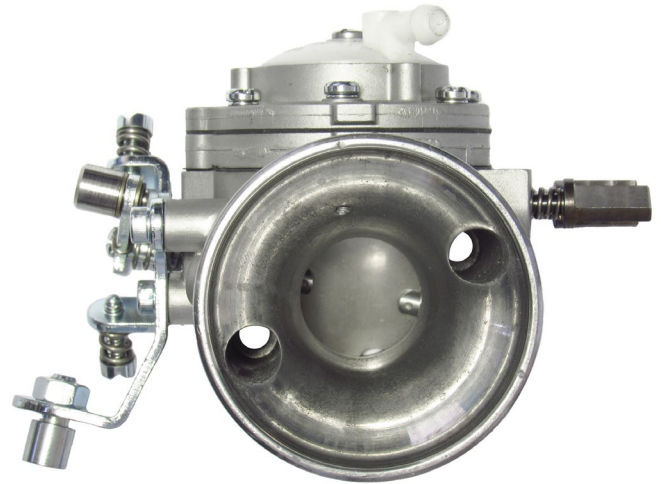


PHOTO OF INLET SIDE
PHOTO CÔTÉ ASPIRATION

Manufacturer - Constructeur

TILLOTSON LTD.

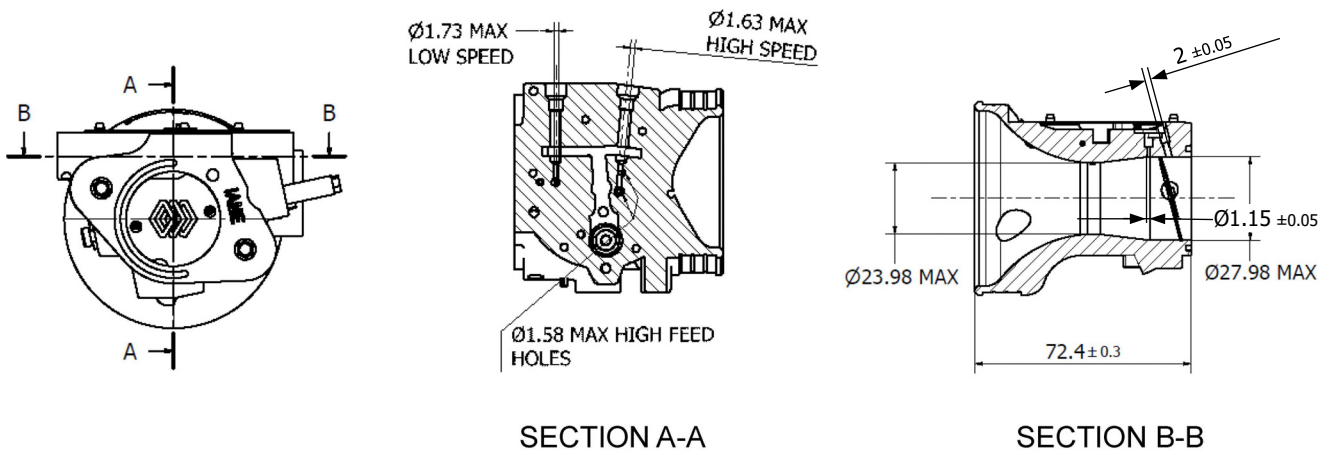
Make - Marque

TILLOTSON

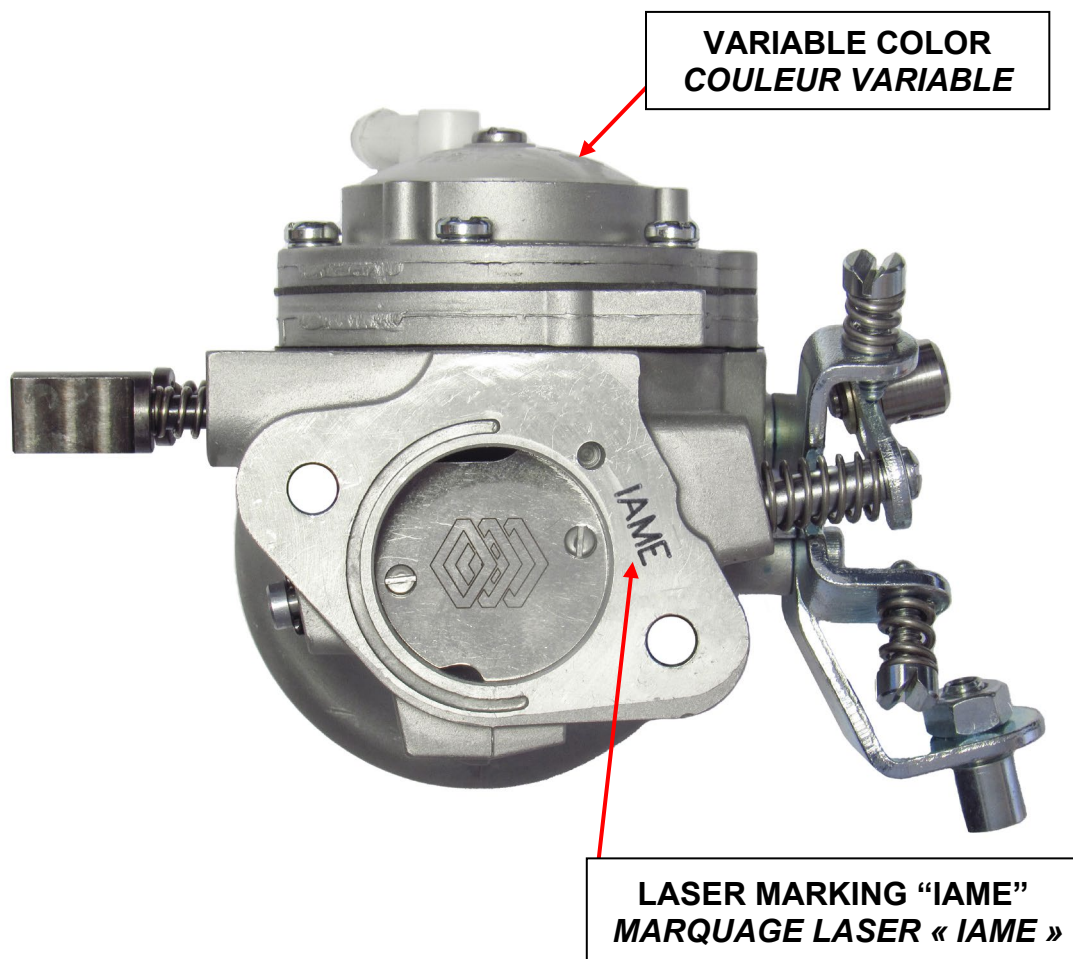
Model - Modèle

HW-50A

SECTION VIEW – VUE DE SECTION AVEC DIMENSIONS



MARKING « IAME » – MARQUAGE « IAME »



CARBURETTOR DESCRIPTION AND SKETCH OF PARTS CARBURATEUR - DESCRIPTION ET DESSIN DES PIÈCES

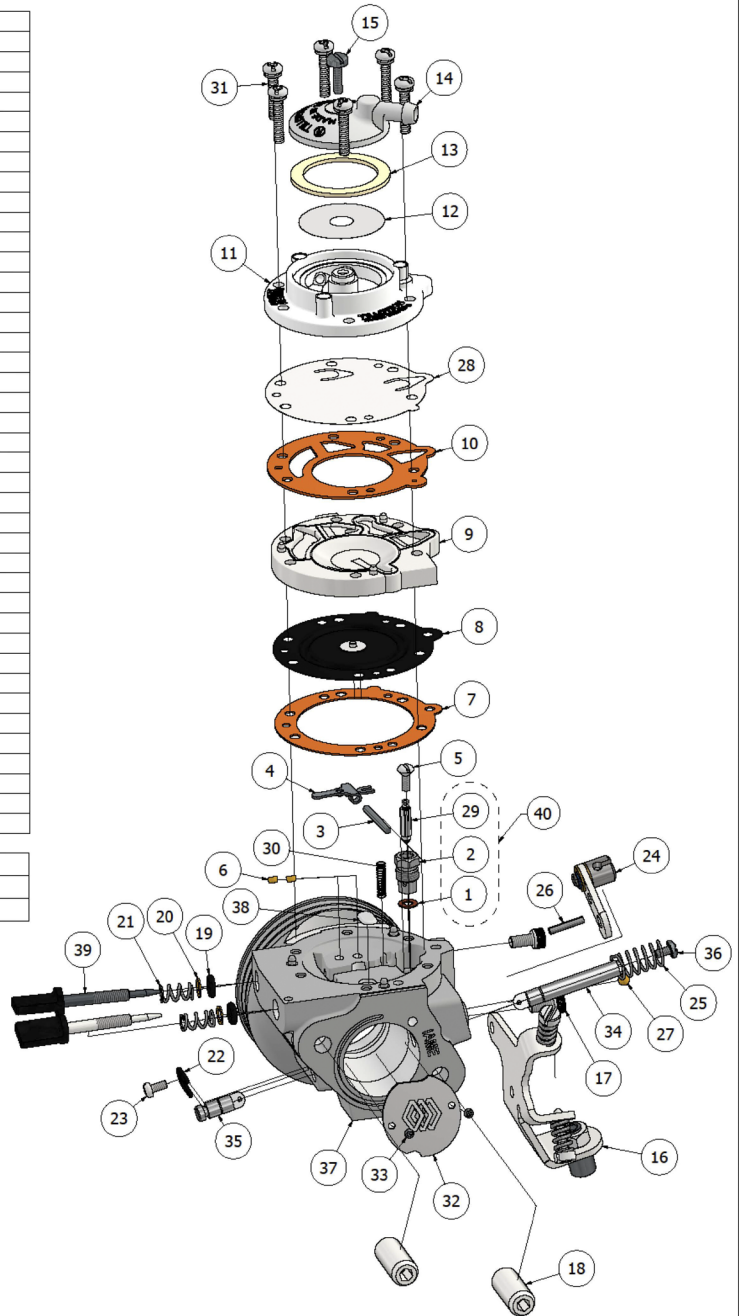
HW-50A EXPLODED VIEW

| PARTS LIST | | | |
|------------|-----|-------------|-----------------------------------|
| ITEM | QTY | PART NUMBER | DESCRIPTION |
| 1 | 1 | 16-B199 | * COPPER GASKET, INLET SEAT |
| 2 | 1 | 36-A42 | * INLET SEAT |
| 3 | 1 | 32-79 | FULCRUM LEVER PIN |
| 4 | 1 | 155-A27 | * INLET VALVE CONTROL LEVER |
| 5 | 1 | 15-B329 | FULCRUM LEVER SCREW |
| 6 | 2 | 80-160 | BRASS PLUG |
| 7 | 1 | 16-B406 | *+ DIAPHRAGM GASKET (ORANGE) |
| 8 | 1 | 237-600 | *+ DIAPHRAGM ASSEMBLY |
| 9 | 1 | 91-A275 | DIAPHRAGM COVER |
| 10 | 1 | 16-B407 | *+ FUEL PUMP GASKET (ORANGE) |
| 11 | 1 | 141-89 | PUMP COVER |
| 12 | 1 | 95-170 | * FUEL STRAINER SCREEN |
| 13 | 1 | 16-B205 | *+ STRAINER GASKET |
| 14 | 1 | 91-A251 | WHITE STRAINER COVER |
| 15 | 1 | 15-B313 | COVER SCREW |
| 16 | 1 | 136-562 | CABLE BRACKET ASSEMBLY |
| 17 | 2 | 15-C67 | M4 X 0.7 SOCKET CAP SCREW |
| 18 | 2 | 81-377 | CARBURETTOR MOUNTING NUT |
| 19 | 2 | 44-361 | ADJUSTMENT SCREW O-RING |
| 20 | 2 | 78-A256 | ADJUSTMENT SCREW WASHER |
| 21 | 2 | 24-B449 | ADJUSTMENT SCREW SPRING |
| 22 | 1 | 29-224 | THROTTLE SHAFT CLIP |
| 23 | 1 | 15-C19 | 4-40 UNC SCREW |
| 24 | 1 | 12-1220 | THROTTLE LEVER ASSEMBLY |
| 25 | 1 | 24-B381 | THROTTLE RETURN SPRING |
| 26 | 1 | 62-A92 | PIN |
| 27 | 1 | 206-135 | 4MM BRASS BALL |
| 28 | 1 | 237-223 | *+ FUEL PUMP DIAPHRAGM |
| 29 | 1 | 34-216 | * INLET NEEDLE |
| 30 | 1 | 24-C298 | INLET TENSION SPRING 42g |
| 31 | 6 | 15-C51 | 6 - 32 UNC SCREW |
| 32 | 1 | 14-A140 | THROTTLE SHUTTER |
| 33 | 2 | 15-C105 | M2 X .4 SCREW |
| 34 | 1 | 13-B220B | SPLIT THROTTLE SHAFT LONG |
| 35 | 1 | 13-B220A | SPLIT THROTTLE SHAFT SHORT |
| 36 | 1 | 15-C52 | LEVER SCREW |
| 37 | 1 | 219-D333TL | HW MACHINED BODY |
| 38 | 1 | 179-69 | WELCH PLUG |
| 39 | 2 | 43-1035 | IDLE MIXTURE SCREW |
| 40 | 1 | 233-721P | INLET SEAT & NEEDLE ASSEMBLY PACK |
| | 1 | DG-10HW | DIAPHRAGM& GASKEY KIT |
| | 1 | RK-14HW | REPAIR KIT |

NOTES:

* INDICATES CONTENTS OF REPAIR KIT

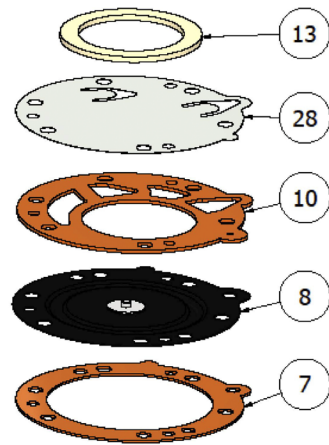
*+ INDICATES CONTENTS OF DIAPHRAGM & GASKET KIT



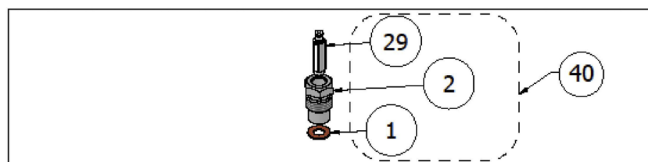
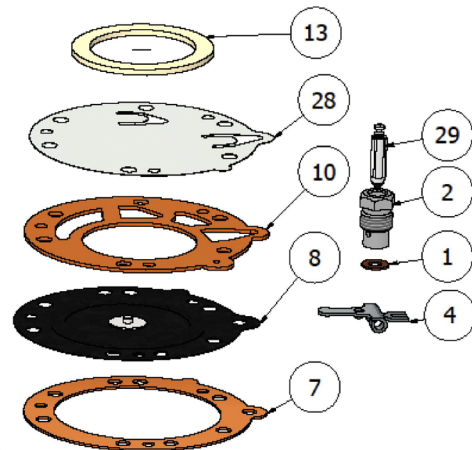
CARBURETTOR DESCRIPTION AND SKETCH OF PARTS CARBURATEUR - DESCRIPTION ET DESSIN DES PIÈCES

HW-50A REPAIR KIT EXPLODED VIEW

| DIAPHRAGM & GASKET KIT [DG-10HW] | | | |
|----------------------------------|-----|-------------|------------------------------|
| ITEM | QTY | PART NUMBER | DESCRIPTION |
| 7 | 1 | 16-B406 | *+ DIAPHRAGM GASKET (ORANGE) |
| 8 | 1 | 237-600 | *+ DIAPHRAGM ASSEMBLY |
| 10 | 1 | 16-B407 | *+ FUEL PUMP GASKET (ORANGE) |
| 13 | 1 | 16-B205 | *+ STRAINER GASKET |
| 28 | 1 | 237-223 | *+ FUEL PUMP DIAPHRAGM |



| REPAIR KIT [RK-14HW] | | | |
|----------------------|-----|-------------|------------------------------|
| ITEM | QTY | PART NUMBER | DESCRIPTION |
| 1 | 1 | 16-B199 | * COPPER GASKET, INLET SEAT |
| 2 | 1 | 36-A42 | * INLET SEAT |
| 4 | 1 | 155-A27 | * INLET VALVE CONTROL LEVER |
| 7 | 1 | 16-B406 | *+ DIAPHRAGM GASKET (ORANGE) |
| 8 | 1 | 237-600 | *+ DIAPHRAGM ASSEMBLY |
| 10 | 1 | 16-B407 | *+ FUEL PUMP GASKET (ORANGE) |
| 13 | 1 | 16-B205 | *+ STRAINER GASKET |
| 28 | 1 | 237-223 | *+ FUEL PUMP DIAPHRAGM |
| 29 | 1 | 34-216 | * INLET NEEDLE |



| 40 - INLET SEAT AND NEEDLE ASSEMBLY PACK [233-721P] | | | |
|---|-----|-------------|-----------------------------|
| ITEM | QTY | PART NUMBER | DESCRIPTION |
| 1 | 1 | 36-A42 | * INLET SEAT |
| 2 | 1 | 34-216 | * INLET NEEDLE |
| 29 | 1 | 16-B199 | * COPPER GASKET, INLET SEAT |



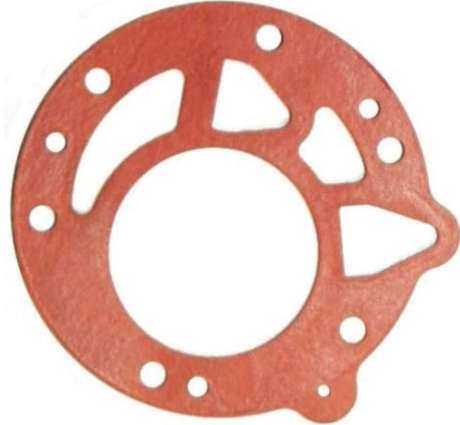
PARTS OF CARBURETTOR - PIÈCES DU CARBURATEUR

REF.7 - P. N°16-B406
DIAPHRAGM GASKET (ORANGE COLOR)
JOINT DE DIAPHRAGME (COULEUR ORANGE)



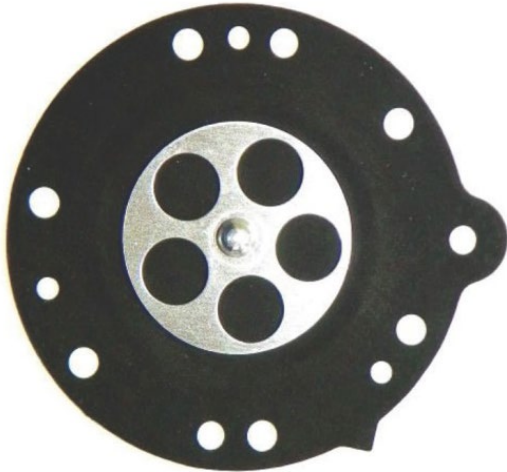
Thickness / Épaisseur = 0.5 ± 0.1 mm

REF.10 - P. N° 16-B407
PUMP DIAPHRAGM GASKET (ORANGE COLOR)
JOINT DE POMPE À ESSENCE (COULEUR ORANGE)



Thickness / Épaisseur = 0.8 ± 0.1 mm

REF.8 - P. N°237-600
DIAPHRAGM / DIAPHRAGME



Thickness / Épaisseur = 0.13 ± 0.07 mm

REF.28 - P. N°237-223
PUMP DIAPHRAGM (TRASPARENT)
MEMBRANE DE POMPE À ESSENCE



Thickness / Épaisseur = 0.07 ± 0.0127 mm

REF.9 - P. N° 91-A275
DIAPHRAGM COVER / COUVERCLE DE DIAPHRAGME



Thickness / Épaisseur = 6.75 ± 0.15 mm

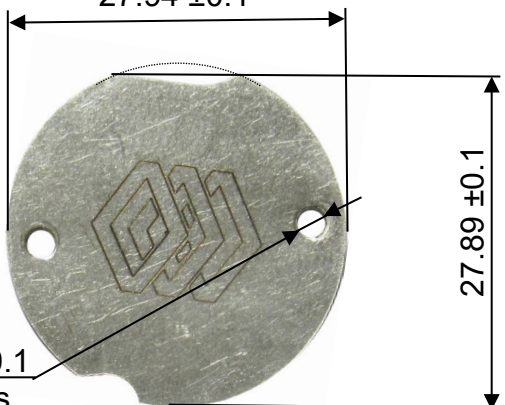
REF.11 - P. N° 141-89
PUMP COVER / CORPS DE POMPE À ESSENCE



Thickness / Épaisseur = 12.5 ± 0.15 mm

REF.32 - P. N° 14-A140
THROTTLE SHUTTER
PAPILLON

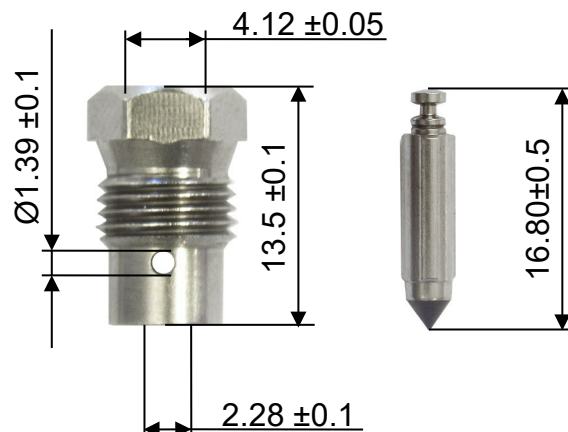
27.94 ±0.1



Ø2.36 ±0.1
N°2 holes

Thickness / Épaisseur = 0.81 ±0.1 mm

REF. 1,2 and 29 (KIT REF. 40) - P. N° 233-721P
SEAT + NEEDLE
SIEGE + POINTEAU



REF.39 - P. N° 43-1035
NEEDLE LOW SPEED
VIS DE RÉGLAGE BAS-REGIME

52.50 ±0.50



REF.39 - P. N° 43-1035
NEEDLE HIGH SPEED
VIS DE RÉGLAGE HAUT-REGIME

52.50 ±0.50



HOLE FOR CARBURETTOR SEALING
TROU POUR LE PLOMBAGE

The carburettor can have this hole for sealing.
Le carburateur peut avoir ce trou pour le plombage.

